

aeon

AEON DIGITAL ADVERTISING MATERIAL TRADING L.L.C

AE1325SK-130

CO₂ Laser Cutting Machine



High Power Performance

The 130W laser ensures fast, clean cuts on thicker materials like acrylic, wood, MDF, and rubber.

Large Cutting Area

The 1300 × 2500mm workspace allows for processing large sheets and complex designs with ease.

Precision & Speed

Achieve detailed engraving and smooth cuts with <0.01mm accuracy.

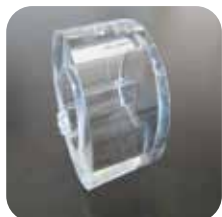
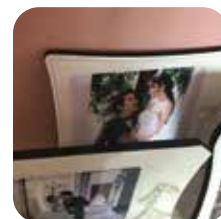
User-Friendly Interface

Compatible with industry-standard software for seamless design integration.

Efficient Cooling System

Water-cooled laser tube ensures stable operation and prolongs machine lifespan.

AE1325SK-130

**SPECIFICATIONS**

Working area	1300*2500mm
Maximum Acceleration	1.2 G
Laser Power	130W
Laser type	CO2 (sealed laser tube,water cooling)
Engraving speed	0-600m/s
Cutting speed	0-400m/s
Reset positioning accuracy	<0.01m
Software supported	Art Cut, Photoshop (Conversion output) CorelDraw, AutoCAD (Direct output)
Rep. Positioning Accuracy	±0.03 mm/1000 mm
File Formats	LXD, DXF, PLT, AI, NC, etc.
Working Environment	0-45°C, Humidity ≤80%, non-condensing
Working Voltage	220V ±10% 50Hz
Chiller	CW5000
Machine Weight	830kg
Overall Size	3850 X 2200 x 1230mm

APPLICATIONS

Perfect for signage, textiles, prototyping, art, and packaging, the AE1325SK-130 delivers precision and power for a wide range of projects.

Signage & Advertising

Cut and engrave acrylic, wood, and plastic for logos and signs.

Textile & Leather

Create intricate patterns on fabrics and leather products.

Industrial Prototyping

Manufacture custom parts and models with precision.

Art & Decoration

Produce artistic engravings, inlays, and decorative items.

